

CURB DETAILS

EN4020 - SINGLE ROOF CURB WITH SUPPORT FRAMING

EN4030 - DOUBLE ROOF CURB

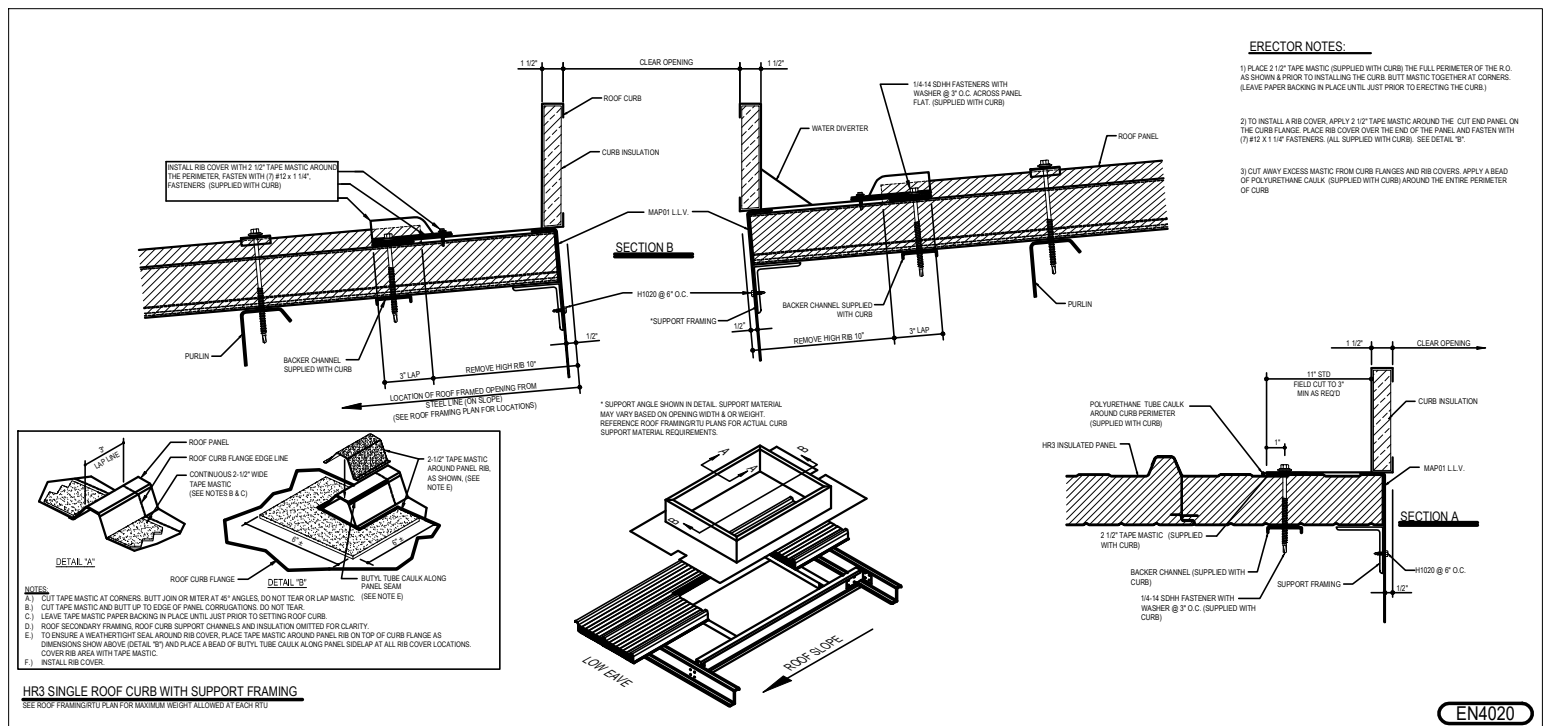
EN4099 - LIGHTWEIGHT ROOF CURB SUPPORT INSTALLATION

EN4100 - LIGHTWEIGHT ROOF CURB



EN4020 - SINGLE ROOF CURB WITH SUPPORT FRAMING

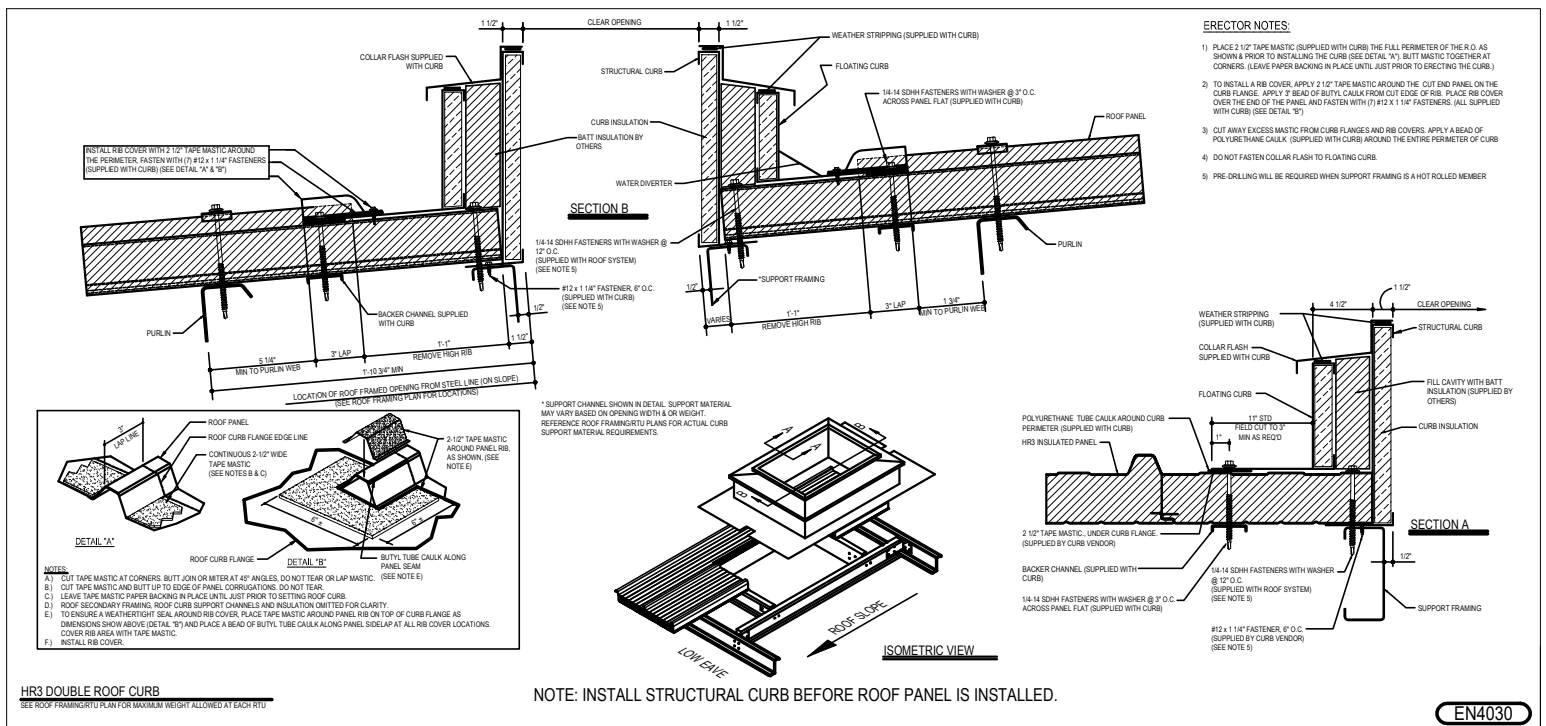
Download the DWG file by clicking [here](#).





EN4030 - DOUBLE ROOF CURB

Download the DWG file by clicking here.

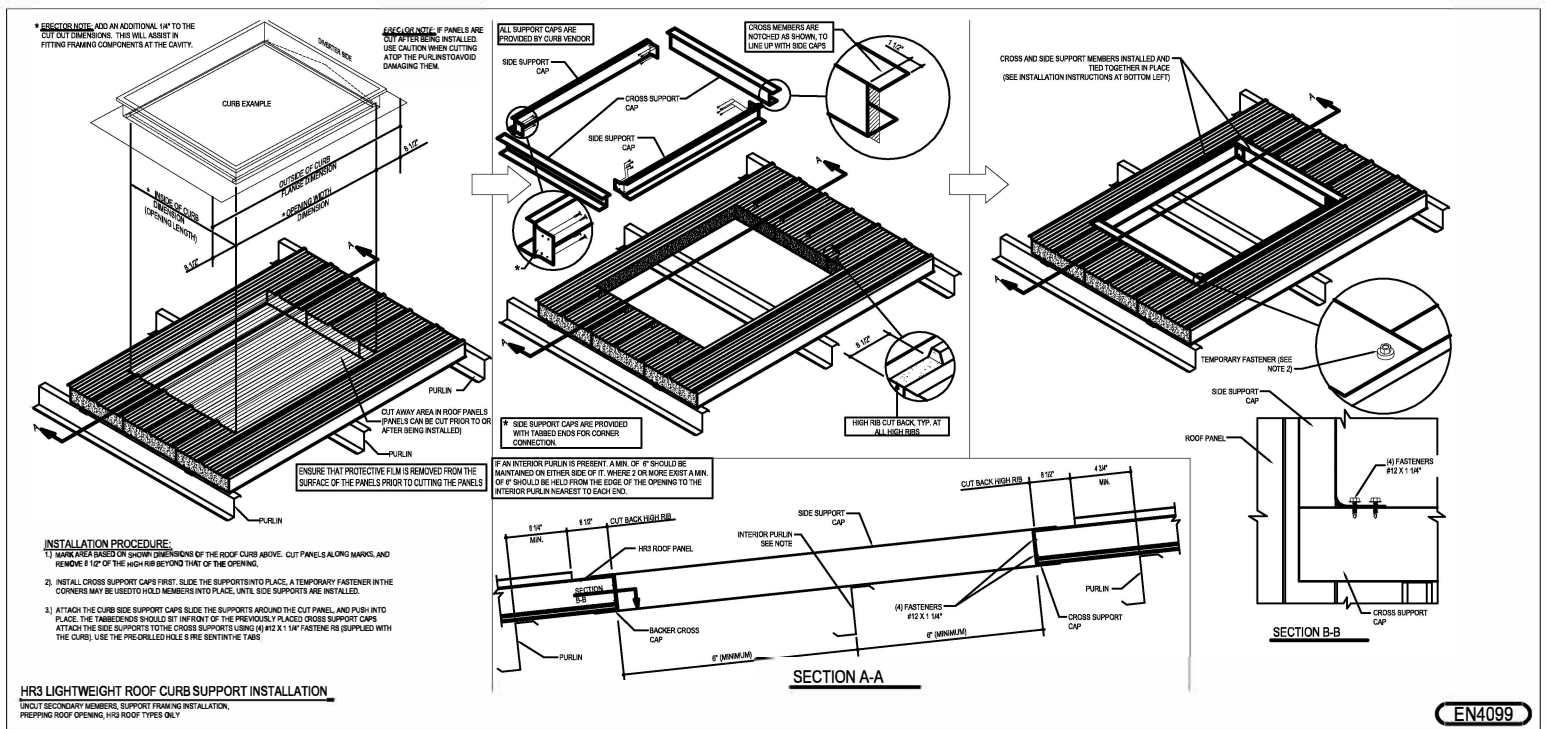


EN4030



EN4099 - LIGHTWEIGHT ROOF CURB SUPPORT INSTALLATION

[Download the DWG file by clicking here.](#)





EN4100 - LIGHTWEIGHT ROOF CURB

Download the DWG file by clicking here.

SAFETY PRECAUTION:
WORKERS SHOULD MAINTAIN A CONSTANT AWARENESS OF THEIR LOCATION IN RELATION TO THE RIBS OF EDGING ANY ROOFING WORK AT ALL TIMES.

RIB COVERS AT EACH PANEL CORRUGATION (SEE NOTE E, SEE DETAIL 'B') (SUPPLIED WITH CURB)

FIELD NOTCH UPSLOPE AND DOWNSLOPE CURB FLANGES AT CORRUGATION LOCATIONS. DO NOT OVERSIZE NOTCHES. PROPER NOTCHING OF FLANGES IS CRITICAL TO WEATHERTIGHTNESS.

FLANGE NOTCH DETAIL (TYPICAL)

DEBURR ALL FIELD CUT EDGES AT PANEL CORRUGATIONS AND PANEL EDGES

DETAIL 'A' (TYPICAL) AT CORNERS

CONTINUOUS 2-1/2" TAPE MASTIC (BOTH SIDES) (SEE NOTE C)

CONTINUOUS 2-1/2" TAPE MASTIC (UPSIDE/DOWNSLOPE) (SEE NOTES B & C) (SUPPLIED WITH CURB)

LAP LINE

CONTOUR LOG

DETAIL 'A'

ROOF PANEL

ROOF CURB FLANGE EDGE LINE

CONTINUOUS 2-1/2" TAPE MASTIC (SEE NOTES B & C)

DETAIL 'B'

2-1/2" TAPE MASTIC AROUND PANEL RIB (AS SHOWN, SEE NOTE B)

BUTYL TUBE CALK ALONG PANEL BEAM (SEE NOTE E)

FASTENERS #12x1-1/4" (LOCATE IN PRE-DRILLED FLANGE HOLES, 7" O.C.)

14-14 SDH FASTENERS WITH WASHER @ 7" O.C. LOCATE IN PRE-DRILLED HOLES (AS PROVIDED BY PANEL SUPPLIER)

POLYURETHANE TUBE CALK AROUND ROOF CURB PERIMETER

SECTION A-A

INSTALLATION PROCEDURES:

- FROM TONESTALLING CURB, MARK A 3" LAP LINE ON THE UPSLOPE/DOWNSLOPE OF PANEL EDGES. PLACE CURB OVER OPENING, LINE UP CURB FLANGES WITH 3" LAP LINE, CENTER CURB OVER OPENING (BOTH SIDE), MARK PANEL RIB LOCATIONS
- NOTCH UPPER AND LOWER CURB FLANGES AS REQUIRED. SEE NOTCH DETAIL FOR DIMENSIONS. DRY-FIT CURB OVER OPENING, CHECK FOR PROPER FIT
- IF A NEW CONSTRUCTION INSTALL AND THE (H) CORNER FASTENERS WERE UTILIZED, REMOVE FROM CORNERS OF FRAMING NOW, OTHERWISE OMIT NOTE.
- CLEAN OFF ALL DEBRIS, OIL, METAL SHAVINGS, ETC. FROM AROUND THE ROOF OPENING AND FROM ROOF CURB UNDERSIDE
- INSTALL ALL PROPER TAPE MASTICS AROUND PERIMETER OF ROOF OPENING. (SEE DETAIL 'A' AND NOTES A & B AND C)
- AFTER TAPE MASTIC PAPER BACKINGS REMOVED, CAREFULLY SET CURB OVER OPENING, ALIGN AND FASTEN WITH #12x1-1/4" ROOF FASTENERS IN PRE-DRILLED FLANGE HOLES AND/OR EVERY 7"
- PRIOR TO RIB COVER INSTALLATION, REFER TO NOTE E. SEED DETAIL 'B' FOR PROPER PLACEMENT OF TAPE MASTIC/TUBE CALK. PLACE COVER OVER PANEL RIB, LINING UP WITH EDGE OF CURB FLANGE, PUSHING DOWN FIRMLY. FASTEN RIB COVER WITH (H) FASTENERS AROUND PERIMETER.
- AFTER ALL ROOF CURB COMPONENTS HAVE BEEN INSTALLED, MAKE SURE AREA AROUND ENTIRE ROOF CURB PERIMETER (INCLUDING RIB COVERS) IS CLEAR OF DEBRIS, OIL, METAL SHAVINGS, ETC. AS NECESSARY, TRIM AWAY EXCESS TAPE MASTIC OR TUBE CALK FROM AROUND CURB COVERS.
- CUT AWAY EXCESS TAPE MASTIC FROM CURB FLANGES AND RIB COVERS, APPLY A BEAD OF POLYURETHANE CALK (SUPPLIED WITH CURB) AROUND THE ENTIRE PERIMETER OF CURB
- INSTALL FALL PROTECTION/SAFETY SCREEN AND DOMED SKYLIGHT AS INSTRUCTED IN DETAIL BEELO.

SECTION B-B

14-14 SDH FASTENERS WITH WASHER @ 7" O.C. ACROSS PANEL FLAT (SUPPLIED WITH ROOF SYSTEM)

7" #12x1-1/4" FASTENERS RECD PER RIB COVER (SUPPLIED WITH CURB)

14-14 SDH FASTENERS WITH WASHER @ 7" O.C.

RIB COVERS AT EACH PANEL CORRUGATION (SEE DETAIL 'B')

POLYURETHANE TUBE CALK AROUND ROOF CURB PERIMETER (RIB COVERS) (SUPPLIED WITH CURB)

INSULATED ROOF PANEL

PURLIN

CROSS SUPPORT CAP (SUPPLIED WITH CURB)

CONTINUOUS 2-1/2" TAPE MASTIC (SUPPLIED WITH CURB)

SACKER PLATE SUPPLIED WITH CURB

1-1/2" MIN

1-1/2" MIN

1-1/2" MIN

1-1/2" MIN

INTERIOR PURLINS NOT SHOWN FOR CLARITY

DETAIL 'B'

FALL PROTECTION SAFETY SCREEN

CONTINUOUS 1-1/2" TAPE MASTIC AROUND CURB PERIMETER (SUPPLIED WITH CURB)

ROOF CURB

POLYURETHANE TUBE CALK AROUND CURB PERIMETER (SUPPLIED WITH CURB)

ROOF PANEL

CURB SUPPORT CAP

SECTION B-B

FALL PROTECTION / SAFETY SCREEN INSTALLATION:

- AS REQUIRED, CUT CURB INSULATION TO LENGTH TO FIT AROUND THE INTERIOR PERIMETER OF ROOF CURB
- PLACE CURB INSULATION INTO BOTTOM CURB SLOT WITH WHITE FACE EXPOSED.
- TAPEY SEAMS WITH WHITE INSULATION TAPE (BY OTHERS)
- INSTALL TAPE MASTIC CONTINUOUS ALONG TOP FLANGE OF CURB
- PLACE SAFETY SCREEN OVER CURB. DO NOT FULLY SEAT SAFETY SCREEN AT THIS STEP.
- TRIM EXCESS INSULATION TO CHANNEL OF SAFETY SCREEN
- FULLY SEAT SAFETY SCREEN TO TOP OF CURB TONESTALLING.

DOMED SKYLIGHT INSTALLATION:

- HANDLE DOMED SKYLIGHT WITH CARE. INSURE THE INSIDE OF THE UNIT IS CLEAR OF DEBRIS THROUGHOUT THE INSTALLATION PROCESS. DO NOT HIT SKYLIGHT FRAME WITH HAMMER OR ANY OTHER KIND OF Mallet. THIS MAY CAUSE THE WELDS TO SPLIT.
- PROPERLY ELEVATE DOMED SKYLIGHT FROM FLAT SURFACES DURING STORAGE TO PREVENT HEAT BUILDUP OR EXCESSIVE INTERNAL TEMPERATURES UNDER THE DOME. OTHERWISE DAMAGE CAN OCCUR TO INTERNAL COMPONENTS.
- CLEANING THE TOP SIDE OF THE FALL PROTECTION SAFETY SCREEN IS NOT REQUIRED. AN AIR SEAL TAPE IS PRE-MOUNTED TO THE UNDERSIDE OF THE SKYLIGHT.
- SET DOMED SKYLIGHT OVER PREPARED CURB, MAKING SURE SKYLIGHT IS SQUARE AND EQUALLY SPACED ON ALL FOUR SIDES OF CURB.
- ATTACH SKYLIGHT WITH PROVIDED SCREWS. BE SURE NOT TO DISTORT THE SKYLIGHT FRAME. DRIVE SCREWS JUST SNUG TO THE FLANGE. OVERTIGHTENING MAY CREATE FORCES WHICH MAY CRACK THE SKYLIGHT LENS.

DOMED SKYLIGHT CLEANING:

- WHEN CLEANING LENS, USE ONLY WATER OR WATER WITH MILD SOAP. USE A SOFT BRAG TO MINIMIZE THE SCRATCHING.
- NEVER USE AMMONIA, ALCOHOL, ACETONIC OR PETROLEUM BASED PRODUCTS TO CLEAN LENS. THIS WILL CAUSE DETERIORATION AND/OR CRACKING OF THE LENS AND WILL VOID THE WARRANTY.

SKYLIGHT FASTENERS (H) 1/2" x 1-1/2" (H) ALL PRE-DRILLED SKYLIGHT FRAME HOLES PROVIDED BY SKYLIGHT MANUFACTURER. PRE-DRILLING MAY BE REQUIRED INTO OTHER MATERIALS.

ROOF PANEL NOT SHOWN FOR CLARITY

LIGHTWEIGHT ROOF CURB INSTALLATION

HR3 ROOF FOR USE WITH PRISMATIC DOMES AND PRISMATIC SMOKE VENTS ONLY

EN4100